

Bromeliad



The leaves from this plant form a central cup to collect rainwater

Sunflower



The head of this flower turns during the day to get the most energy from the sun

Lotus



Water does not stick to the leaves from this plant. Rain droplets run right off taking dirt with them, keeping the leaves clean.

Namib beetle



The bumps on this beetle's back catch water from the air, turning dew drops into drinking water.

Termite mound



Inside the termite mound, there are lots of tunnels and vents. They let fresh air move through to keep it cool inside.

Polar bear



The polar bear's fur is made of special hollow hairs. The air inside each hair helps trap warmth.

Shark



The textured pattern on the shark's skin stops bacteria and algae from sticking

Live Oak Tree



Deep roots and flexible wood allow this tree to bend in the wind without breaking

Spider web



Spider silk reflects UV light so that birds can see the web and don't fly in it.

Bird's nest



Birds build nests from materials found nearby: feathers, twigs, fur, grass

Wasp's nest



Wasps chew up wood to make a strong, waterproof material for their nest.

Pinecone



Pinecones open and close with the weather, keeping the seeds dry and protected.

Tree frog



This frog's colour and pattern look just like tree bark, so it can easily hide!

Leaf insect



This insect's shape looks just like a leaf, so it can hide easily in the plants around it!

Fox



The fox lives in a burrow under the ground, so it doesn't disturb nature around it.

Sea turtle



Buried in the sand, heated by the sun, my eggs stay nice and warm!

Sycamore seeds



This seed has a special shape that spins like a propeller in the wind.

Hermit crab



This crab uses an empty shell left behind by another creature to protect its soft body.

Owl's nest



Owls nest in tree holes that are already there, so they have a home without hurting the tree.

Bamboo



Bamboo is hollow like a straw. It is very strong and light.

Giant Lily



A leaf from this plant can hold the weight of a child. The ribs underneath make it superstrong.

Penguin



To keep this penguin warm, cold blood in his feet is warmed up before flowing into his body, while the warm blood flowing to his feet is cooled down.

Firefly



The firefly has a special organ to make light.

Honey bee



Using hexagon shapes, bees use little material to build something very strong.

Energy



Use energy from sunlight
or wind

Water



Collect and recycle
rainwater

Insulation



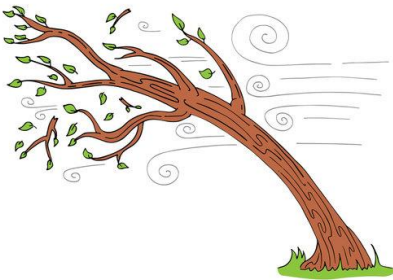
Keep warm in winter and
cool in summer.

Clean



Easy to clean and
maintain

Strong



Built to be safe and
sturdy

Look



Look like part of the
nature around it

Share



Live peacefully with
animals, and let them
share the space with us

Material



Use eco-friendly
materials